

## SF-DN4

Digital Audio to Network Interface



- Converts Two Left/Right Digital Audio Sources to Four Dante Network Audio Signals
- AES/EBU or S/PDIF Coaxial or Optical Inputs
- Digital Signal Lock Indicator for Valid Inputs
- Supports Input Sampling Rates from 44.1 kHz to 192 kHz
- Selectable Dante Sample Rates: 44.1 kHz, 48 kHz, 88.2 kHz, 96 kHz
- Transformer-Isolated AES/EBU Input
- Digital Audio Sources Remain in the Digital Domain through the Dante Network Output
- LED Indicator for Valid Power and Network Sync
- Operation from PoE Power (Class 0, IEEE 802.3af)
- Equipped for SysFlex™ Rack Mounting or Surface Mounting

## SF-ND2

Network to Digital Audio Interface



- Converts Two Dante Network Audio Signals to Left/Right Digital Audio
- AES/EBU or S/PDIF Coaxial or Optical Output
- Selectable Dante Sample Rates: 44.1 kHz, 48 kHz, 88.2 kHz, 96 kHz
- Digital Audio Output Sample Rate Equals Dante Sample Rate
- Transformer-Isolated AES/EBU Output
- Dante Audio Signals Remain in the Digital Domain through the Output
- LED Indicator for Valid Power and Network Sync
- Operation from PoE Power (Class 0, IEEE 802.3af)
- Equipped for SysFlex™ Rack Mounting or Surface Mounting

## SF-NL2

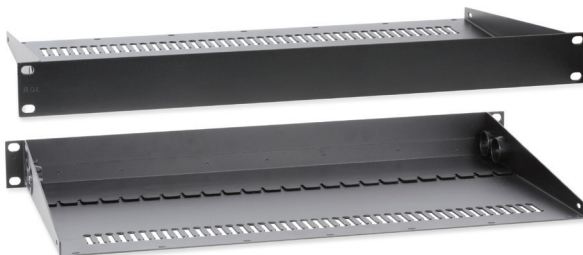
Network to Audio Interface



- Converts Two Dante Network Audio Signals to Balanced Analog
- Selectable Dante Sample Rates: 44.1 kHz, 48 kHz, 88.2 kHz, 96 kHz
- Each Output Switch-Selectable for Mic or Line Level
- Line-Level Outputs Provide +4 dBu with 20 dB Headroom
- Exceptional Low-Noise and Low-Distortion Performance
- High Resolution 24 Bit Digital to Analog Conversion
- Legendary RDL Analog Filtering Enhances Superb Audio Performance
- LED Indicator for Valid Power and Network Sync
- Operation from PoE Power (Class 0, IEEE 802.3af)
- Equipped for SysFlex™ Rack Mounting or Surface Mounting

## SF-RA1

SysFlex™ Rack Adapter



- 1 RU 19" Rack Chassis for Mounting Multiple SysFlex™ Modules
- Compatible with All SysFlex™ Modules
- Each SysFlex™ Module Secured by One Single Screw
- Easy Installation with provision for cable harnessing

The SysFlex™ series is a *NEW* family of A/V modules providing complex interface solutions at the click of a connector.

► To receive an e-mail notification when these products are available for shipment, sign up at [rdlnet.com/Dante](http://rdlnet.com/Dante).

# sysflex

The SysFlex™ series is a family of A/V modules providing complex interface solutions at the click of a connector. SysFlex™ modules provide connectorized interface between data networks and analog and digital audio devices, networked and conventional amplifiers and other application-specific solutions. In RDL's tradition of versatility, SysFlex™ modules can be used right where they are needed: Rack-mounted, Surface-mounted, or unmounted. They are light-weight, compact and easy to install with simple, straightforward switch settings and LED indicators. Modules quickly snap into the SysFlex™ rack mount and each is firmly secured with a single screw. The racking system segregates network and power wiring from the audio and digital audio connectors. For connectorized network audio endpoints and A/V system components that provide unparalleled performance and advanced features without giving up simplicity and ease of installation, SysFlex™ is the industry's best value.